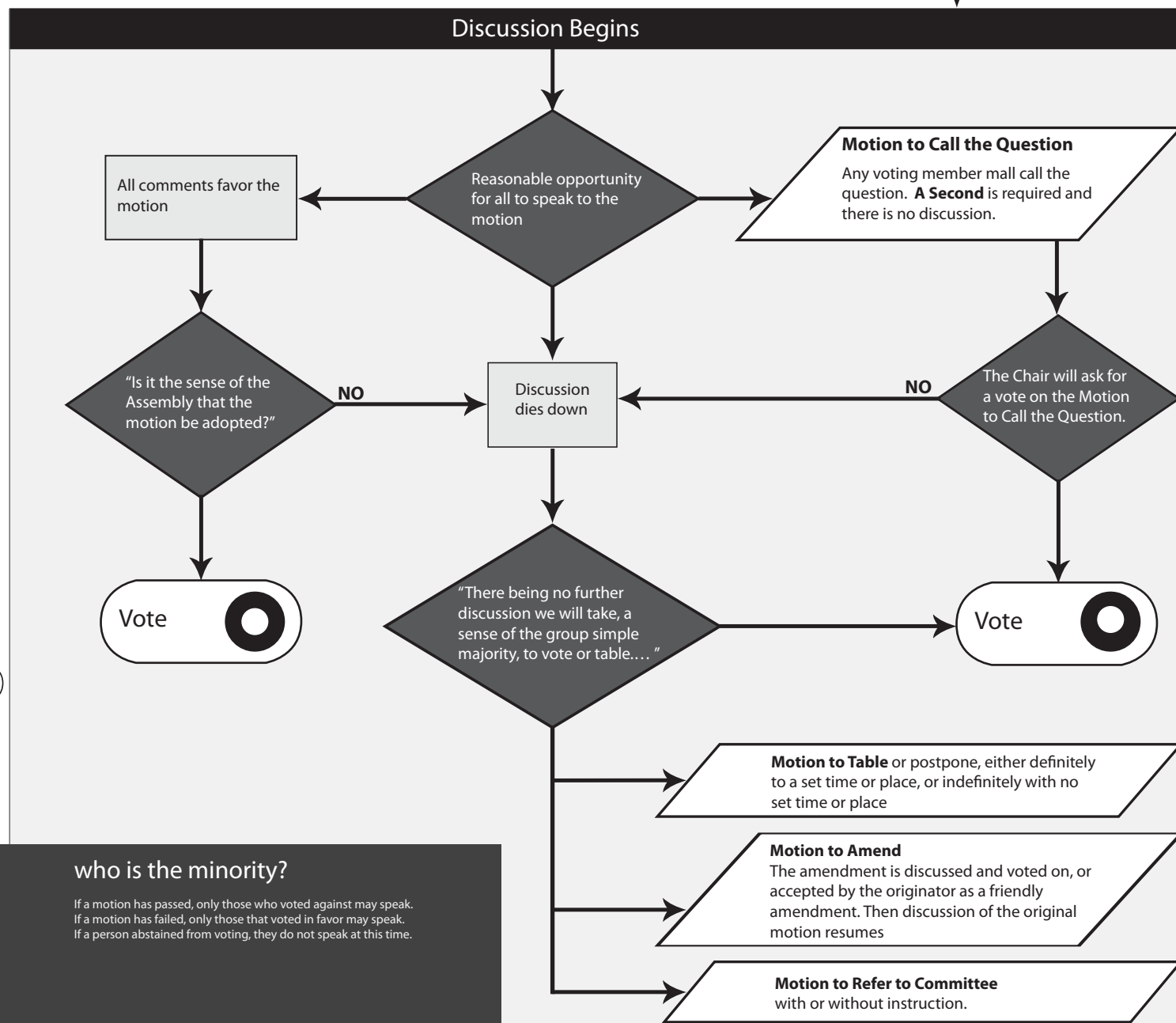
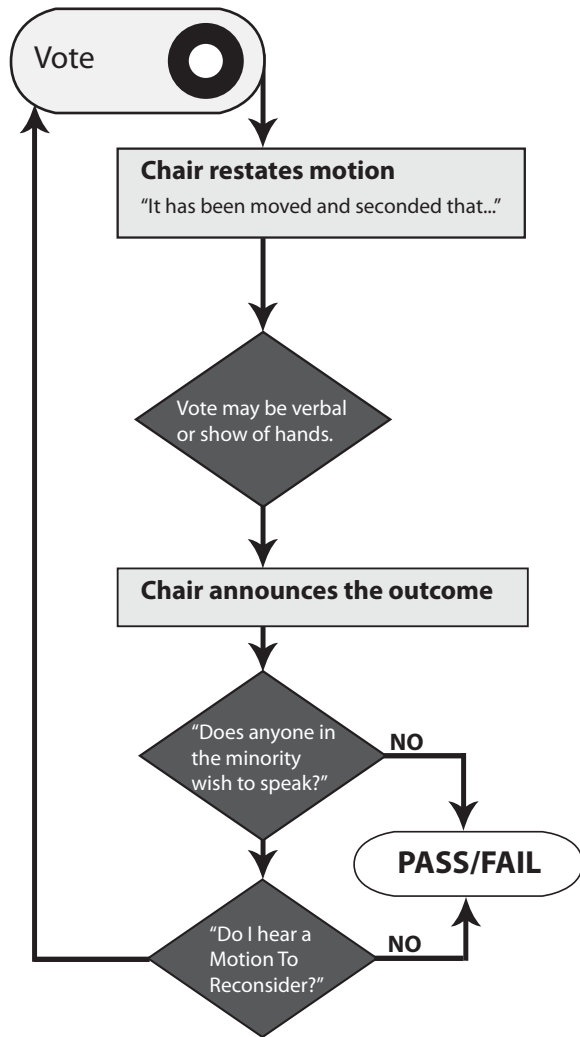
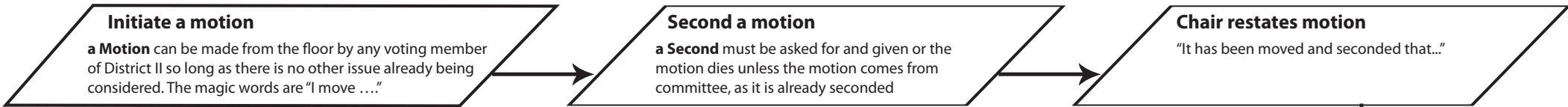


# District 2 VOTING PROCEDURES



## what is majority?

**Simple Majority:** This is having one or more votes over 50% of the votes actually cast. For example if 50 votes were cast in total than a simple majority would be 26. If 50 people were eligible to vote but only 40 actually voted a simple majority would be 21.

**Substantial Majority:** For any motion that requires the expenditure of district funds the Finance Committee will be asked to report and the motion will require a substantial majority. This is having one or more votes over 66.67% of the votes actually cast. In the event of a fractional amount the vote should be the next whole number up.

## who is the minority?

If a motion has passed, only those who voted against may speak. If a motion has failed, only those that voted in favor may speak. If a person abstained from voting, they do not speak at this time.